



# AESTHETICALLY BOLD

Fall Winter 2025  
Collection

JJ HEITOR SHOES

## CONCEPT

The new FW25 collection by JJ Heitor Shoes, entitled "Aesthetically Bold", is a tribute to boldness, self-confidence, and the unique style of the contemporary woman.

Designed to elegantly transition from day to night, each model embodies versatility and visual impact, responding to the dynamic needs of the cosmopolitan woman.

Striking lines and daring details take center stage, enhanced by sophisticated textures such as croc, leopard print, fur effect, and metallic finishes, which add a touch of extravagance, modernity, and refinement to each piece.

The color palette has been carefully selected, featuring rich and elegant tones such as Ground Coffee, Sepia, Cherry Lacquer, Unbleached Cotton, and Dark Olive, perfect for the season.

Discover the FW25 collection by JJ Heitor Shoes and be inspired to express your individuality with confidence and elegance at every moment.



## BOOTS



# TEXAS

Texas, our Texan-style leather boots with an inside zip fastening. The pointed toe and tapered heel make them authentic and exclusive.

The key piece to complete your look this autumn/winter.

Made in Portugal from high quality, durable materials.

## ABOUT ME

Upper: Leather

Lining: 100% Leather

Outsole: Neolite (Synthetic)

Heel: 6cm



# NASHVILLE

Nashville, the most iconic cowboy boots are back! With a pointed toe and a tapered mid-heel, these boots bring together attitude and sophistication in an authentic design.

The contrast between the embossed bordeaux leather and the black side elastic adds modernity without losing the western essence.

Crafted in Portugal with high-quality, long-lasting materials, they are the perfect choice for those seeking striking style and comfort in every step.

## ABOUT ME

Upper: Leather

Lining: 100% Leather

Outsole: Neolite (Synthetic)

Heel: 6cm



# NASHVILLE

Nashville, the most iconic cowboy boots are back! With a pointed toe and a tapered mid-heel, these boots bring together attitude and sophistication in an authentic design.

The contrast between the embossed bordeaux leather and the black side elastic adds modernity without losing the western essence.

Crafted in Portugal with high-quality, long-lasting materials, they are the perfect choice for those seeking striking style and comfort in every step.

## ABOUT ME

Upper: Leather

Lining: 100% Leather

Outsole: Neolite (Synthetic)

Heel: 6cm



# VERONA

Verona, elegance in every step!

Our Verona boots are the perfect balance between sophistication and versatility.

With a mid-calf design and sleek high heel in black leather, they deliver a striking presence without compromising on comfort.

A modern classic that pairs effortlessly with both casual and formal looks, always adding a touch of attitude and elegance.

Crafted in Portugal with high-quality, long-lasting materials.

## ABOUT ME

Upper: Leather

Lining: 100% Leather

Outsole: Neolite (Synthetic)

Heel: 8.5cm



# VERONA

Verona, elegance in every step!

Our Verona boots are the perfect balance between sophistication and versatility.

With a mid-calf design and sleek high heel in dark brown leather, they deliver a striking presence without compromising on comfort.

A modern classic that pairs effortlessly with both casual and formal looks, always adding a touch of attitude and elegance.

Crafted in Portugal with high-quality, long-lasting materials.

## ABOUT ME

Upper: Leather

Lining: 100% Leather

Outsole: Neolite (Synthetic)

Heel: 8.5cm





# SIENA

Siena, elegance with personality!

The Siena boots are the perfect combination of style and comfort.

With a mid-calf design and block heel in black leather, they offer a sophisticated and striking presence without giving up stability for everyday wear.

A contemporary classic that moves effortlessly between casual and formal looks, always adding a modern touch full of attitude.

Crafted in Portugal with high-quality, long-lasting materials.

## ABOUT ME

Upper: Leather

Lining: 100% Leather

Outsole: Neolite (Synthetic)

Heel: 8.5cm

# SIENA

Siena, Elegance with Personality!

Siena boots are the perfect combination of style and comfort.

With a mid-height shaft and wide wooden-toned heel, they offer a sophisticated and striking presence without sacrificing everyday stability.

A contemporary classic that transitions effortlessly between casual and formal looks, always adding a modern touch full of attitude. Made in Portugal with high-quality, long-lasting materials.

## ABOUT ME

Upper: Leather

Lining: 100% Leather

Outsole: Neolite (Synthetic)

Heel: 8.5cm



# HAMBURGO

Hamburg, style with attitude!

The Hamburg boots stand out with their classic and elegant design, perfect for those who value comfort and versatility.

A practical and modern model that pairs easily with urban and contemporary looks, always adding a touch of personality.

Crafted in Portugal with high-quality, long-lasting materials.

## ABOUT ME

Upper: Leather

Lining: 100% Leather

Outsole: Neolite (Synthetic)

Heel: 5.5cm



# HAMBURGO

Hamburg, style with attitude!

The Hamburg boots stand out with their classic and elegant design, perfect for those who value comfort and versatility.

A practical and modern model that pairs easily with urban and contemporary looks, always adding a touch of personality.

Crafted in Portugal with high-quality, long-lasting materials.

## ABOUT ME

Upper: Leather

Lining: 100% Leather

Outsole: Neolite (Synthetic)

Heel: 5.5cm





# FLORENCE

Florence are the perfect combination between the timeless classic and current trend.

They're a great option for those who want to move away from the usual and, at the same time, highlight monochrome styles.

Made in Portugal with high-quality and long-lasting materials.

## ABOUT ME

Upper: Leather

Lining: 100% Leather

Outsole: Neolite (Synthetic)

Heel: 6.5cm



# FLORENCE

Florence are the perfect combination between the timeless classic and current trend.

They're a great option for those who want to move away from the usual and, at the same time, highlight monochrome styles.

Made in Portugal with high-quality and long-lasting materials.

## ABOUT ME

Upper: Leather

Lining: 100% Leather

Outsole: Neolite (Synthetic)

Heel: 6.5cm



# BARCELONA

The Barcelona are the perfect combination of style, elegance and attitude for those who want to rock outfits this autumn and winter.

Made in Portugal with high quality, long-lasting materials.

## ABOUT ME

Lining: 100% Leather

Outsole: PU(Synthetic)

Heel: 5cm



# BARCELONA

The Barcelona are the perfect combination of style, elegance and attitude for those who want to rock outfits this autumn and winter.

Made in Portugal with high quality, long-lasting materials.

## ABOUT ME

Lining: 100% Leather

Outsole: PU(Synthetic)

Heel: 5cm



# LOAFERS







# DALLAS

The Dallas, a timeless classic.

With elegant lines and a minimalist design, this model stands out for the iconic coin detail on the instep, a symbol of sophistication and tradition.

Versatile and comfortable, it combines classic elegance with a modern, urban touch, making it perfect for everyday wear

Crafted in Portugal with high-quality, long-lasting materials.

## ABOUT ME

Upper: Leather

Lining: 100% Leather

Outsole: PU (Synthetic)

Heel: 3cm





# HOUSTON

Houston, a classic with its own identity.

They combine the classic sophistication of the loafer with the bold design of a robust sole.

The contrast of colors gives them a distinctive and elegant character, perfect for those who appreciate unique details.

Versatile and comfortable, they easily adapt to different styles and occasions, always with a touch of originality.

Crafted in Portugal with high-quality, long-lasting materials

## ABOUT ME

Upper: Leather

Lining: 100% Leather

Outsole: EVA (Synthetic)

Heel: 4.5cm



# HOUSTON

Houston, a classic with its own identity.

They combine the classic sophistication of the loafer with the bold design of a robust sole.

The contrast of colors gives them a distinctive and elegant character, perfect for those who appreciate unique details.

Versatile and comfortable, they easily adapt to different styles and occasions, always with a touch of originality.

Crafted in Portugal with high-quality, long-lasting materials

## ABOUT ME

Upper: Leather

Lining: 100% Leather

Outsole: EVA (Synthetic)

Heel: 4.5cm



# HOUSTON

Houston, a classic with its own identity.

They combine the classic sophistication of the loafer with the bold design of a robust sole.

The contrast of colors gives them a distinctive and elegant character, perfect for those who appreciate unique details.

Versatile and comfortable, they easily adapt to different styles and occasions, always with a touch of originality.

Crafted in Portugal with high-quality, long-lasting materials

## ABOUT ME

Upper: Leather

Lining: 100% Leather

Outsole: EVA (Synthetic)

Heel: 4.5cm





# OXFORD

Our Oxfords, inspired by the classic English shoe. Few models are as timeless as the Oxford!

With minimalist and sophisticated lines, this black leather design is the ideal choice for those seeking versatility.

It pairs effortlessly with both formal and casual looks, while never losing its attitude.

## ABOUT ME

Upper: Leather

Lining: 100% Leather

Outsole: TPU (Synthetic)

Heel: 2cm



ER LINDBERG

M  
RD

# OXFORD

Our Oxfords, inspired by the classic English shoe.  
Few models are as timeless as the Oxford!

With minimalist and sophisticated lines, this black leather design is the ideal choice for those seeking versatility.

It pairs effortlessly with both formal and casual looks, while never losing its attitude.

## ABOUT ME

Upper: Leather

Lining: 100% Leather

Outsole: TPU (Synthetic)

Heel: 2cm





# NEW YORK

The New York is already part of our timeless line.

They combine modern, city style with classic elegance.

Perfect for everyday use.

Made in Portugal with high quality, long-lasting materials.

## ABOUT ME

Upper: Leather

Lining: 100% Leather

Outsole: Rubber

Heel: 3cm



# NOTTING HILL

Notting Hill, the Oxfords that combine tradition and modernity with an authentic, sophisticated design.

Featuring a rounded toe, T-strap cut, and adjustable metal buckle, these loafers blend classic lines with delicate details that convey timeless charm.

The perfect choice for those seeking style and functionality in everyday wear.

Crafted in Portugal with high-quality, long-lasting materials.

## ABOUT ME

Upper: Leather

Lining: 100% Leather

Outsole: Rubber

Heel: 3cm



# NOTTING HILL

Notting Hill, the Oxfords that combine tradition and modernity with an authentic, sophisticated design.

Featuring a rounded toe, T-strap cut, and adjustable metal buckle, these loafers blend classic lines with delicate details that convey timeless charm.

The perfect choice for those seeking style and functionality in everyday wear.

Crafted in Portugal with high-quality, long-lasting materials.

## ABOUT ME

Upper: Leather

Lining: 100% Leather

Outsole: Rubber

Heel: 3cm









# CHICAGO

The mules of the season combine the timelessness of our most classic line with an irreverent design that will add a special touch to your look.

One of this season's trends, bold but very comfortable.

Dare to wear them.

## ABOUT ME

Upper: Leather

Lining: 100% Leather

Outsole: PU (Synthetic)

Heel: 2.5 cm

# MARY JANES





# PARIS

Our Paris, inspired by the iconic Mary Jane.  
Not many styles are so classic as the Mary Jane!

They're the real trend this autumn-winter, a minimalist and extremely romantic piece.

The distinctive heel gives them a more daring and irreverent touch, while at the same time making them very light and comfortable to walk around all day.

## ABOUT ME

Upper: Leather

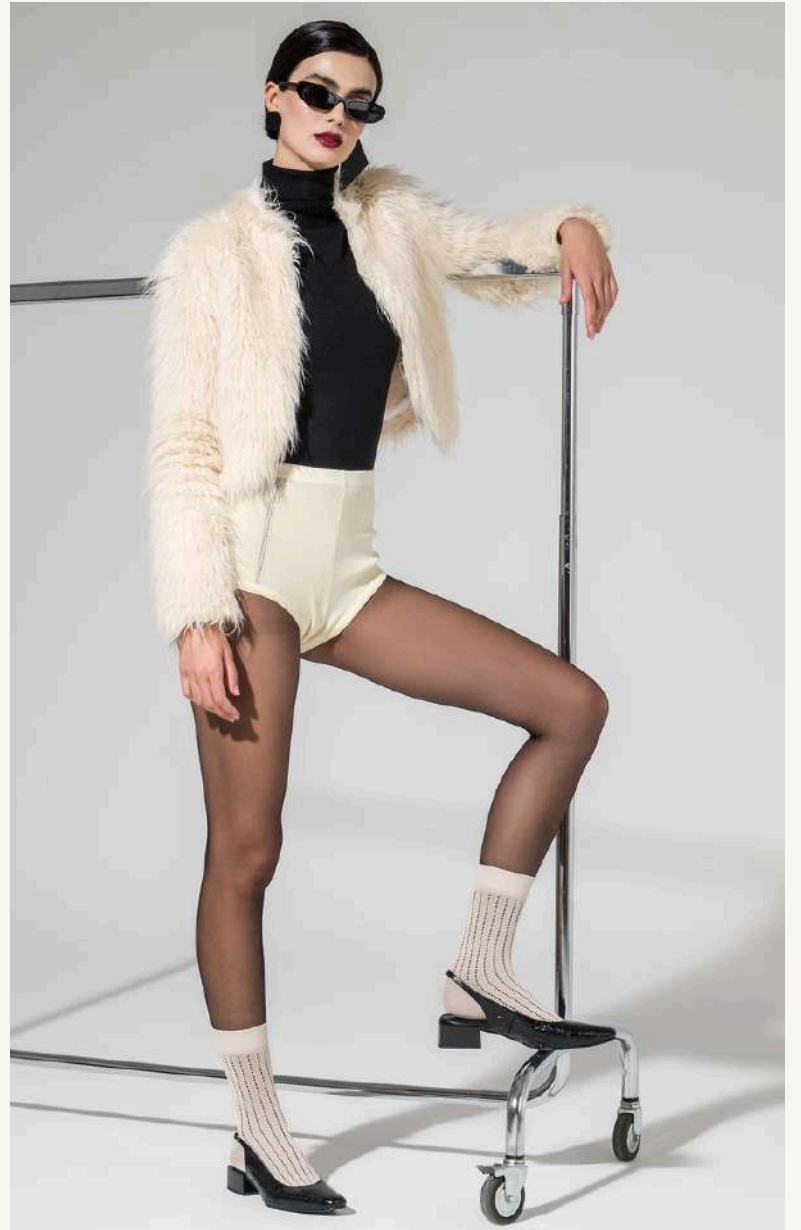
Lining: 100% Leather

Outsole: Neolite (Synthetic)

Heel: 4cm







# COIMBRA

Coimbra, the classic reinvented for everyday wear.

Elegant and timeless, these black croco slingbacks bring sophistication to any look.

The low block heel ensures absolute comfort, while the minimalist and versatile design makes them the perfect choice for any occasion.

Crafted in Portugal with high-quality, long-lasting materials, they strike the perfect balance between style, practicality, and elegance.

## ABOUT ME

Upper: Leather

Lining: 100% Leather

Outsole: Neolite (Synthetic)

Heel: 3.5cm



# COIMBRA

Coimbra, the classic reinvented for everyday wear.

Elegant and timeless, these black croco slingbacks bring sophistication to any look.

The low block heel ensures absolute comfort, while the minimalist and versatile design makes them the perfect choice for any occasion.

Crafted in Portugal with high-quality, long-lasting materials, they strike the perfect balance between style, practicality, and elegance.

## ABOUT ME

Upper: Leather

Lining: 100% Leather

Outsole: Neolite (Synthetic)

Heel: 3.5cm





# LISBOA

Lisbon are the classic of classics, perfect for everyday wear. Made with the latest design trends, they are the option that never compromises.

Besides being simple and elegant, they're super comfortable.

Made in Portugal with high-quality and long-lasting materials.

## ABOUT ME

Upper: Leather

Lining: 100% Leather

Outsole: PU (Synthetic)

Heel: 3.5cm





# NAPOLI

Napoli, sophistication with boldness!

The Napoli mules in black stand out with their clean and sophisticated design, perfect for those who value timeless style and versatility.

A practical and comfortable model that adapts to different occasions, always ensuring a subtle touch of modernity.

Crafted in Portugal with high-quality, long-lasting materials.

## ABOUT ME

Upper: Leather

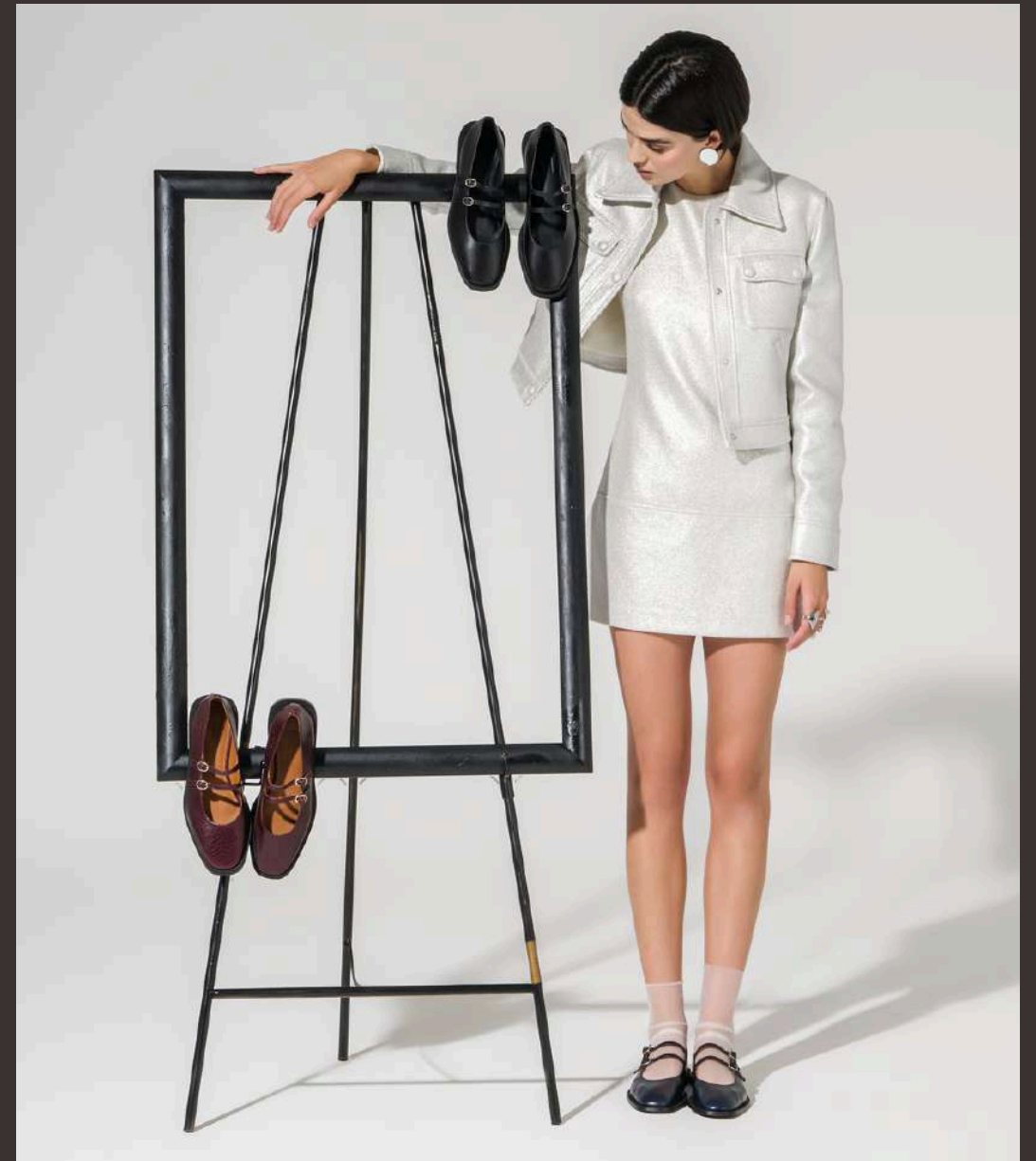
Lining: 100% Leather

Outsole: Neolite (Synthetic)

Heel: 4cm



# BALLET FLATS



# TÓQUIO

Tokyo, an authentic model with simple, sophisticated lines that highlight feminine delicacy.

These camel leather Mary Janes, with a rounded toe and buckle detail, are the perfect choice for an elegant and versatile look.

Crafted in Portugal with high-quality, long-lasting materials.

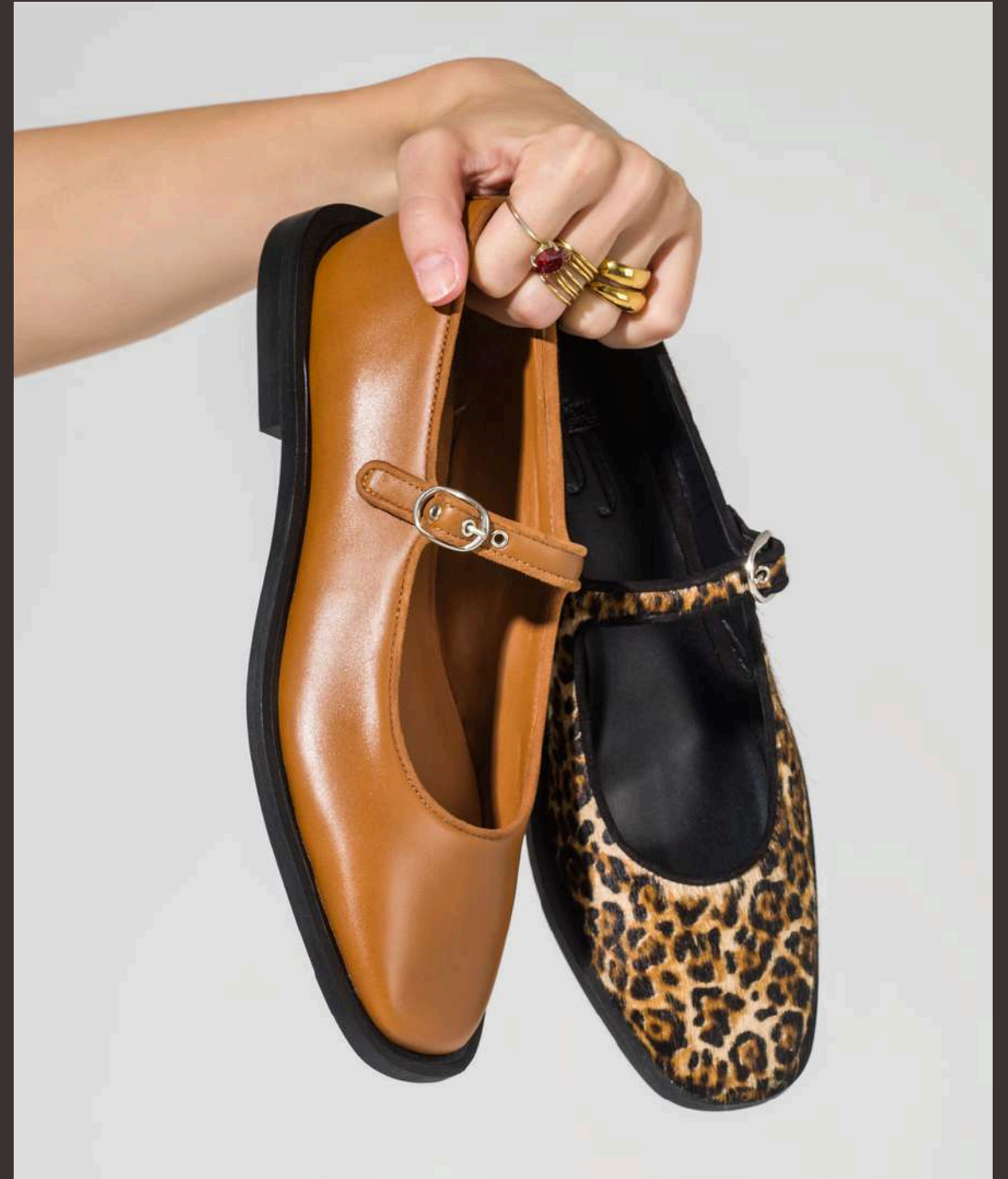
## ABOUT ME

Upper: Leather

Lining: 100% Leather

Outsole: TPU (Synthetic)

Heel: 2cm





# TÓQUIO

Tokyo, an authentic model defined by classic lines and sophisticated details.

Reinterpreted in leopard-print leather, which gives them a bold touch, they are the perfect choice to make any look stand out.

Crafted in Portugal with high-quality, long-lasting materials.

## ABOUT ME

Upper: Leather

Lining: 100% Leather

Outsole: TPU (Synthetic)

Heel: 2cm





# SEUL

Seul, leather loafers that embody elegant, delicate, and feminine charm.

The two buckle straps add sophistication and a touch of refinement, making this model the perfect choice for those seeking everyday elegance.

Crafted in Portugal with high-quality, long-lasting materials.

## ABOUT ME

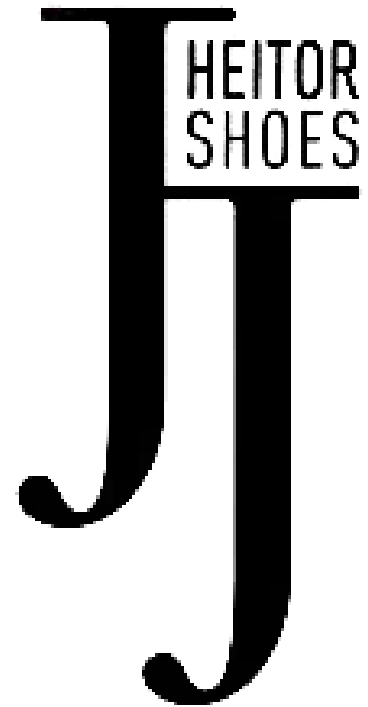
Upper: Leather

Lining: 100% Leather

Outsole: PU (Synthetic)

Heel: 1.5cm



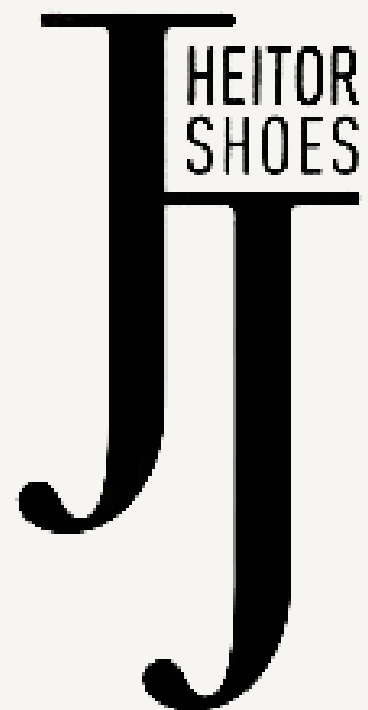


**JJ HEITOR © 2025**

**WWW.JJHEITORSHOES.COM | INFO@JJHEITORSHOES.COM**

**FACEBOOK.COM/JJHEITORSHOES | INSTAGRAM.COM/JJHEITORSHOES**

**T +351 256 379 630 | F +351 256 379 639**



Cofinanciado pela  
União Europeia